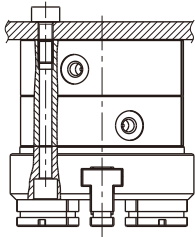


Installation and application

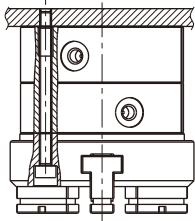
1. Due to the abrupt changes, the circuit pressure is low, which will lead to the decrease of the gripping force and falling of the work-pieces.
In order to avoid the harm to the human body and damage to the equipment, anti-dropping device must be equipped.
2. Don't use the air gripper under strong external force and impact force.
3. When install and fix the air gripper, avoid falling down, collision and damage.
4. When fixing the gripping jaw parts, don't twist the gripping jaw.
5. There are several kinds of installation method, and the locking torque of fastening screw must be within the prescribed torque range shown in the below chart.
If the locking torque is too large, it will cause the dysfunctional. If the locking torque is too small, it will cause the position deviation and fall.

Tail installation type



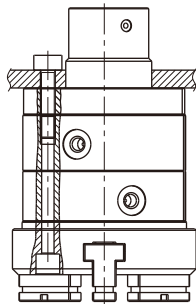
Bore size	The bolts type	Max. locking moment(N.m)	Max. screwed depth(mm)	The aperture of the positioning bore(mm)	The depth of the positioning bore(mm)
16	M4×0.7	2.1	8	Φ17 ^{+0.05} ₀	1.5
20	M4×0.7	2.1	8	Φ21 ^{+0.05} ₀	1.5
25	M4×0.7	2.1	8	Φ26 ^{+0.05} ₀	1.5
32	M4×0.7	2.1	8	Φ34 ^{+0.05} ₀	2
	M5×0.8	4.3	10	Φ34 ^{+0.05} ₀	2
40	M4×0.7	2.1	8	Φ42 ^{+0.05} ₀	2
	M5×0.8	4.3	10	Φ42 ^{+0.05} ₀	2
50	M5×0.8	4.3	10	Φ52 ^{+0.05} ₀	2
	M6×1.0	7.3	12	Φ52 ^{+0.05} ₀	2
63	M6×1.0	7.3	12	Φ65 ^{+0.05} ₀	2.5
	M8×1.25	18	16	Φ65 ^{+0.05} ₀	2.5

The installation of the front through hole



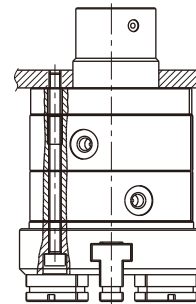
Bore size	The bolts type	Max. locking mement(N.m)
16	M3×0.5	0.88
20	M3×0.5	0.88
25	M3×0.5	0.88
32	M4×0.7	2.1
40	M4×0.7	2.1
50	M5×0.8	4.3
63	M6×1.0	7.3

Tail installation type(with push rod)



Bore size	The bolts type	Max. locking moment(N.m)	Max. screwed depth(mm)	The aperture of the positioning bore(mm)
32	M5×0.8	4.3	10	Φ32 ⁰ _{-0.05}
40	M5×0.8	4.3	10	Φ40 ⁰ _{-0.05}
50	M6×1.0	7.3	12	Φ50 ⁰ _{-0.05}
63	M8×1.25	18	16	Φ60 ⁰ _{-0.05}

The installation of the front through hole(with push rod)



Bore size	The bolts type	Max. locking mement(N.m)
32	M4×0.7	2.1
40	M4×0.7	2.1
50	M5×0.8	4.3
63	M6×1.0	7.3

6. The installation method of the gripping jaw fittings

When install the gripping jaw fittings, you have to pay particular attention that you can only hold the gripping jaw by using spanner, and then lock the screws with allen wrench. Never clamp the body directly and then lock the screws, otherwise the parts will be easily damaged.

Install the gripping jaw fittings

Bore size	The bolts type	Max. locking mement(N.m)
16	M3×0.5	0.59
20	M3×0.5	0.59
25	M3×0.5	0.59
32	M4×0.7	1.4
40	M4×0.7	1.4
50	M5×0.8	2.8
63	M5×0.8	2.8

